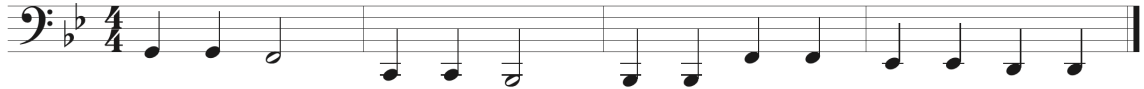


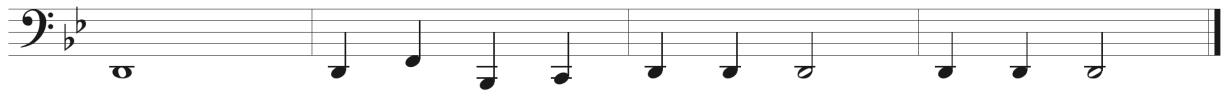
Band Scramble for Tuba!

- Each 4-measure example is a familiar song from your Measures of Success Book, but the measures are in the wrong order!
- Play each example as written and try to figure out what song it is.
- Find the tune in your Measures of Success Book and play it!
- Write the name and number of the song above each example. If you can't print at home, write them on a separate sheet of paper.

A



B



C



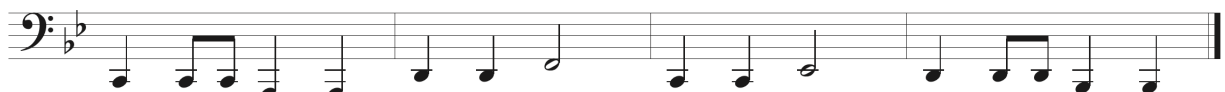
D



E



F



G



H

