



PITTSFORD CENTRAL SCHOOL DISTRICT

Capital Project Update

BOARD OF EDUCATION
July 15, 2013

Excellence Today and Tomorrow



Capital Project Breakdown

1 Proposition 1 – Base facilities project

2 Proposition 2 – PE/Athletic Field project

Total Budget Summary

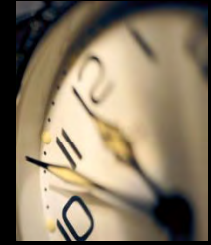
TOTAL	Cost
Proposition #1	\$35,567,898
Proposition #2	\$7,563,888
Total	\$43,131,786

What Have We Been Doing?

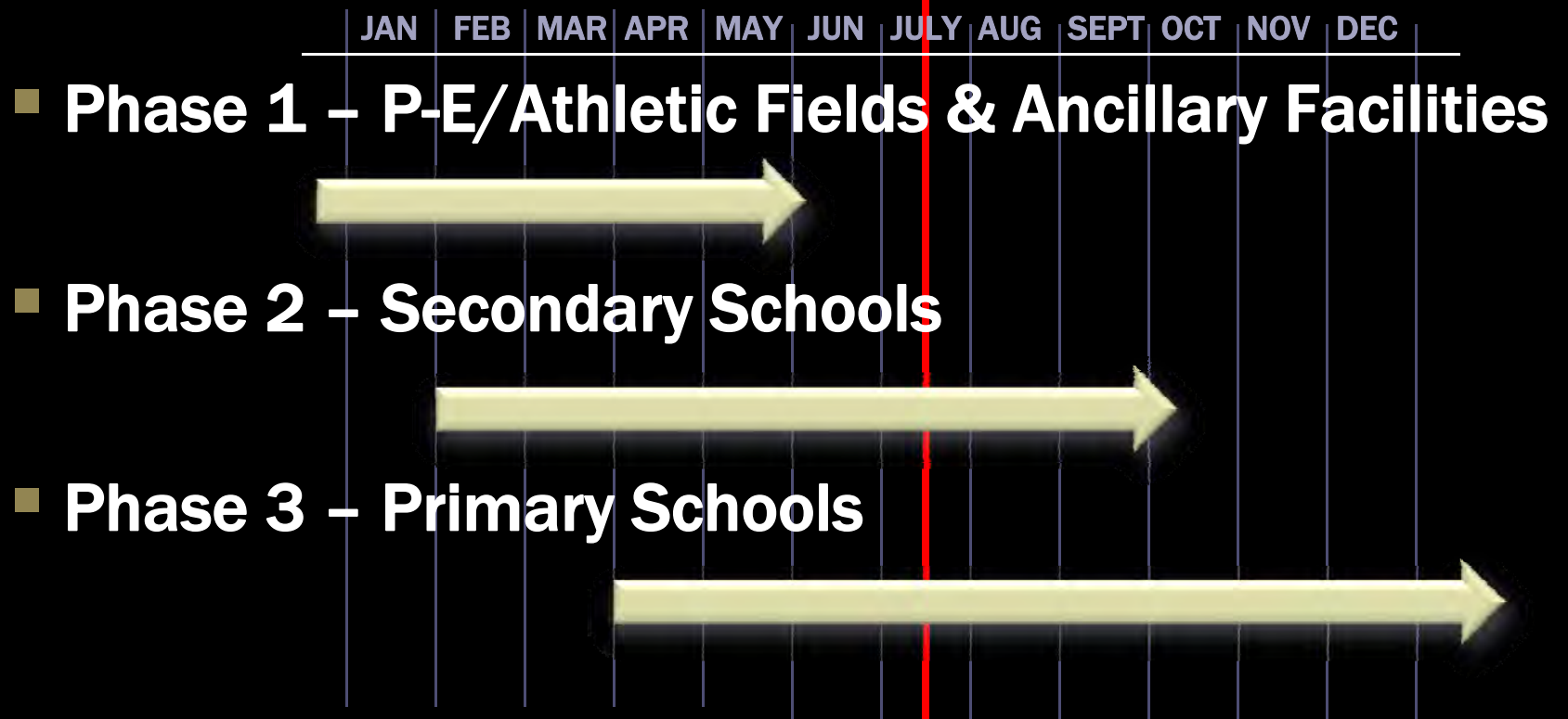
- **Continuing Stakeholder Meetings**
- **Reviewing building components**
- **Drafting up design solutions**
- **Compiling SED paperwork**
- **Integrating outside agency applications**
- **Reviewing contractual obligations to go into bid sets**



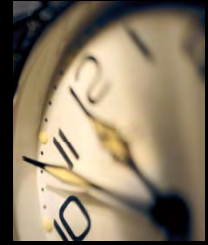
Breaking It Down - Phasing



Design Phase of the Work

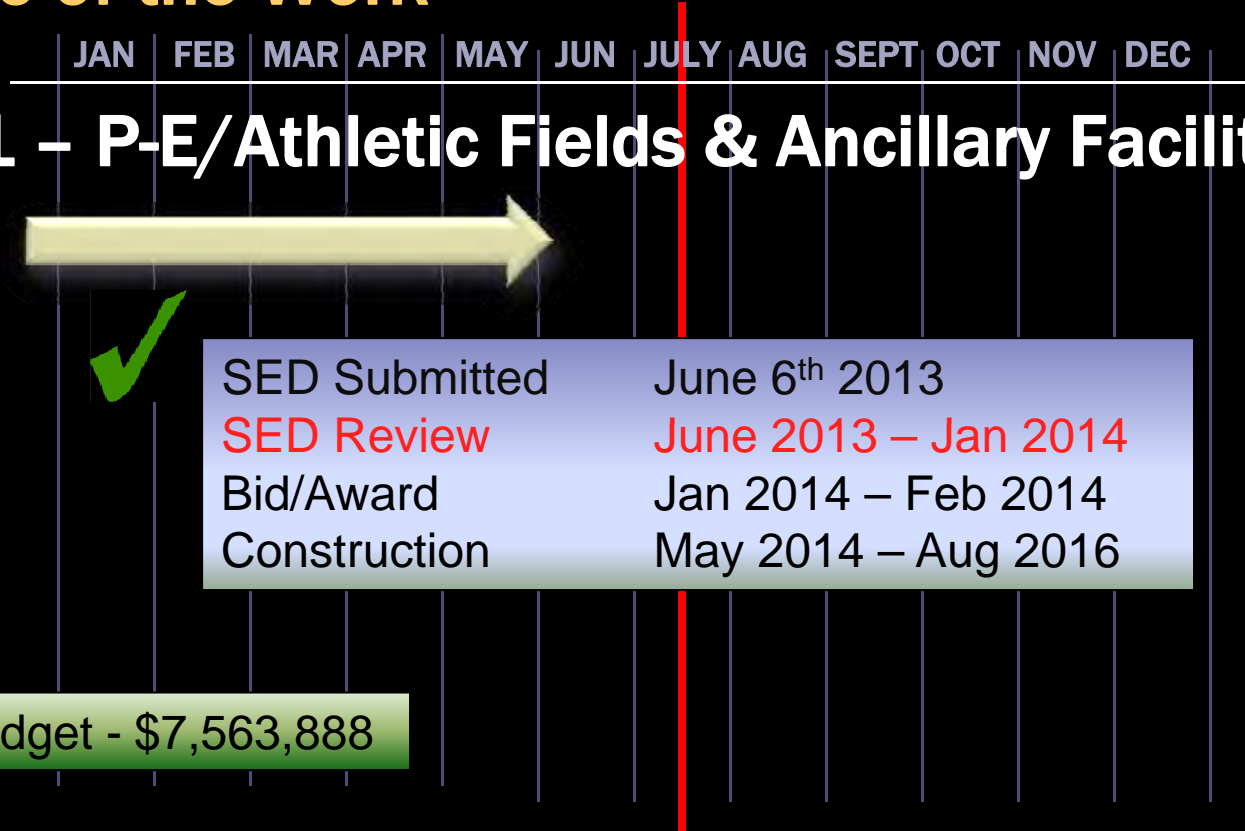


Breaking It Down - Phasing



Design Phase of the Work

Phase 1 – P-E/Athletic Fields & Ancillary Facilities



Phase #1 Budget - \$7,563,888

Highlights – Phase 1

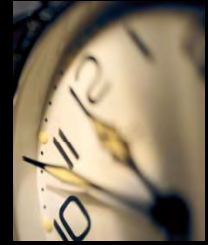
- Integrated turf fields into existing stadiums
- Re-aligned access and control
- Integrated toilets and concession
- Added storage for equipment
- Added lights to Sutherland
- Will be meeting with Stakeholders for final detail walkthrough
- Fundraising efforts, meet the goal



Pittsford Schools

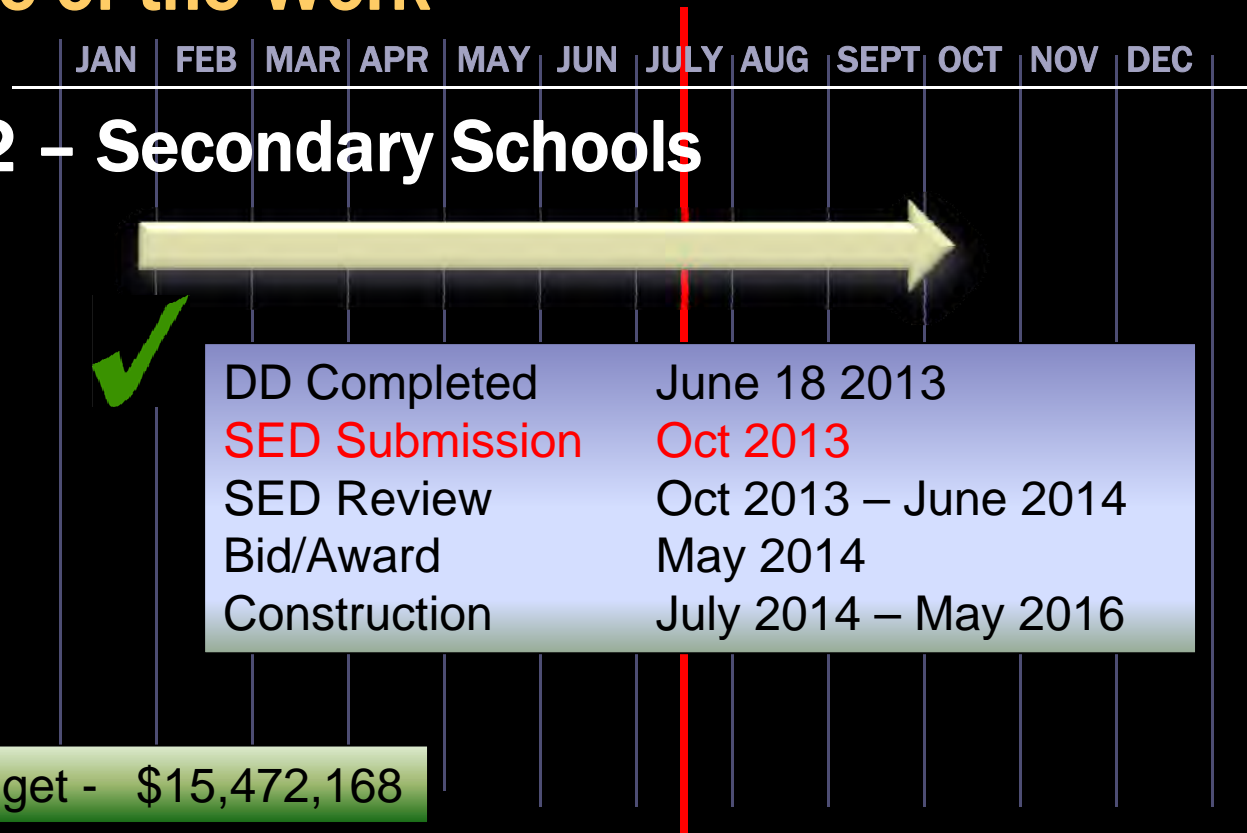


Breaking It Down - Phasing



Design Phase of the Work

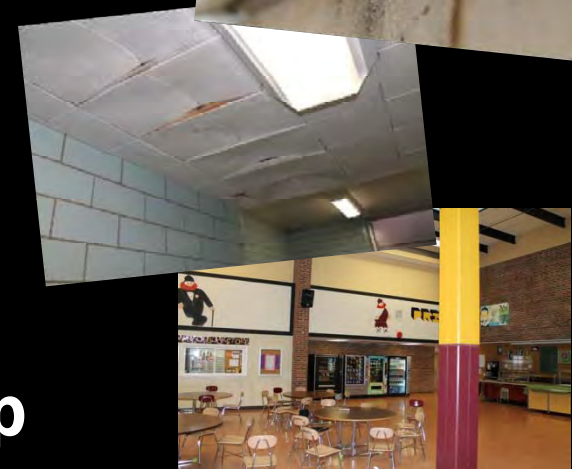
■ Phase 2 – Secondary Schools



Phase 2 Budget - \$15,472,168

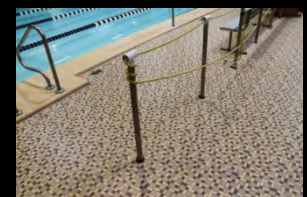
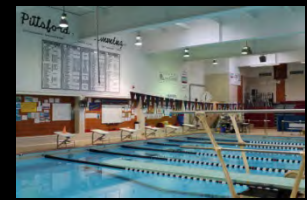
Highlights – Phase 2

- Health & safety items
- Toilets rooms/Accessibility
- Asbestos abatement, floors
- Mechanical systems
- Electrical Systems
- Masonry Restoration on exterior
- Secure entry at MHS
- Meeting with Principals coming up

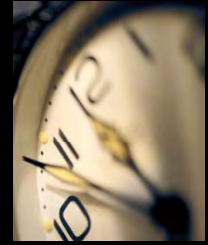


Highlights – Phase 2

- **Pool repairs**
 - 4 pools in the District, all were allocated funds for repairs
 - Original BCS items were scaled back
 - Review has prompted discussions of spending monies, but not being able to fix/repair all the issues
 - Pool study was requested and is now underway

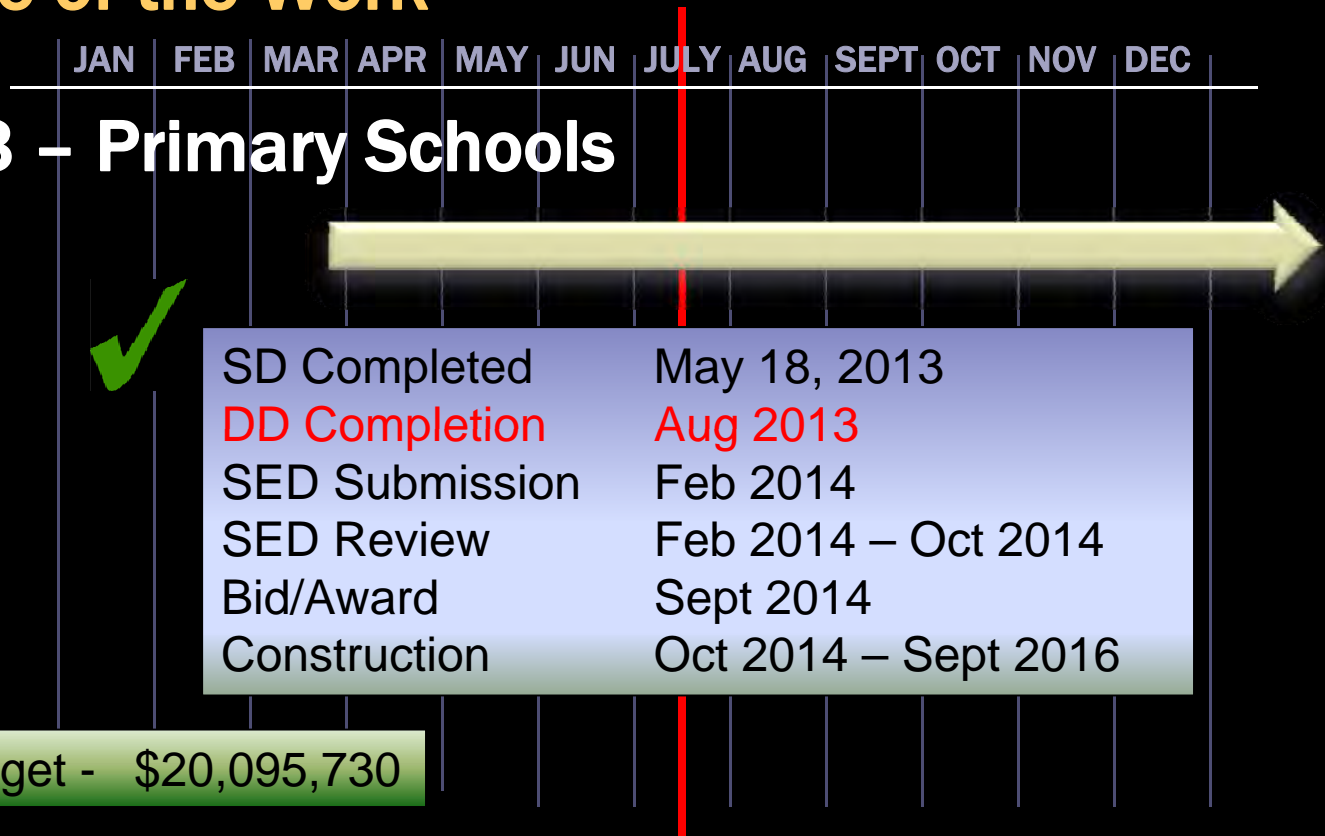


Breaking It Down - Phasing



Design Phase of the Work

■ Phase 3 – Primary Schools



Phase 3 Budget - \$20,095,730

Design Highlights – Phase 3

- Health & safety items
- Accessibility
- Mechanical systems
- Electrical infrastructure
- Masonry restoration
- Auditorium upgrades
- Site safety items
- Meeting with Principals shortly



Pittsford Schools



Bid and Construction

- Working on:
 - Bid package
 - Phasing and logistics
 - Building interest in the marketplace
 - Alternates and bid protection



Budget

- **Overall budget is tracking well**
 - Slight fluctuations by phase
 - No major surprises at this point
- **Developing a strategy for budget protection on bid day**
 - Defining alternates
 - Bid packaging
 - Re-qualifying scope
- **Fundraising efforts, prior to bid - Jan 2014**



Capital Project Update

BOARD OF EDUCATION

Pittsford Schools

