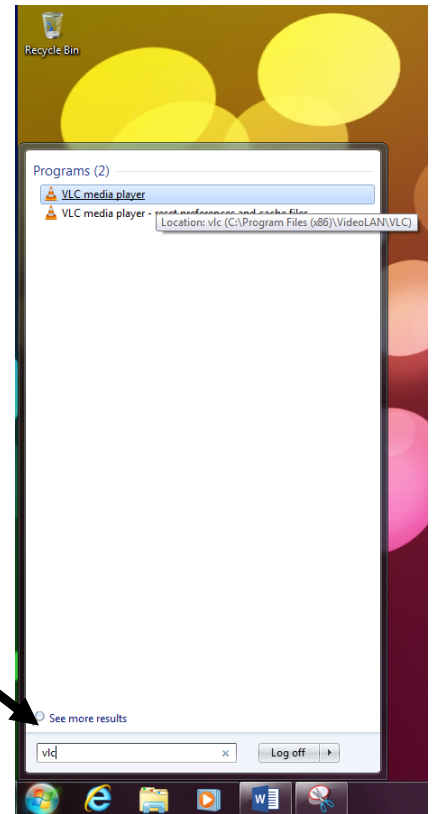
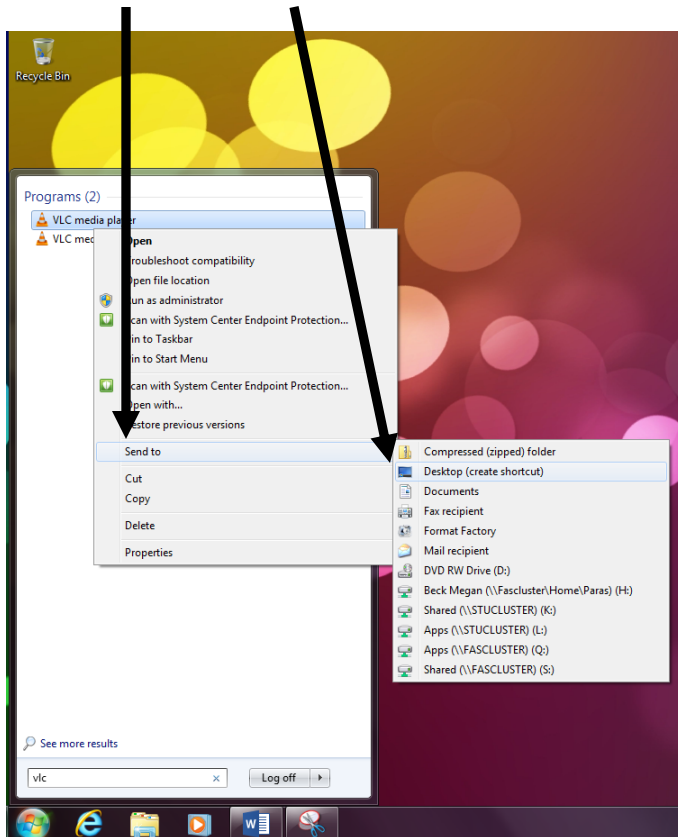


Finding VLC on your PC and Creating a Desktop Shortcut

1. Go to the start button and in the search bar at the bottom type in "VLC"



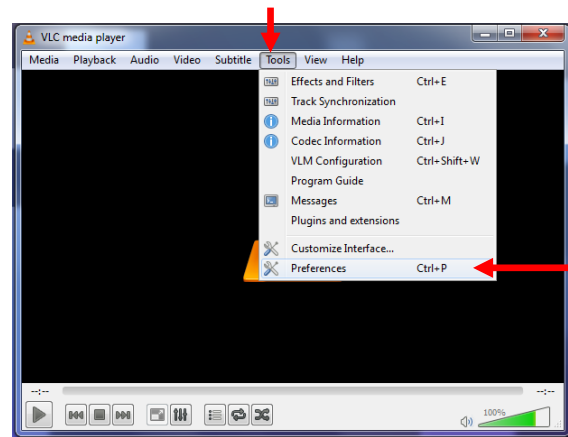
2. Right click on "VLC Media Player" and select Send to>Desktop(create shortcut)



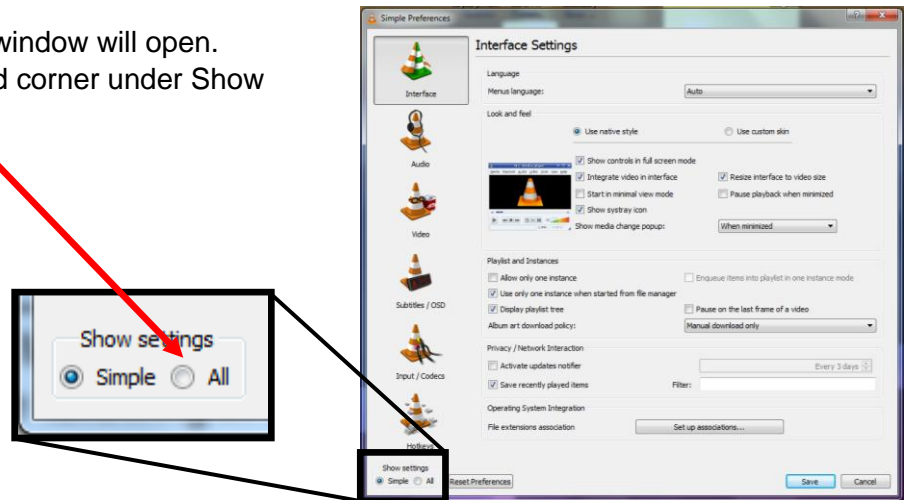
3. This will create a VLC Icon on your desktop for quick access each week.

Setting Up VLC Media Player to Automatically Connect to Video Announcements Stream

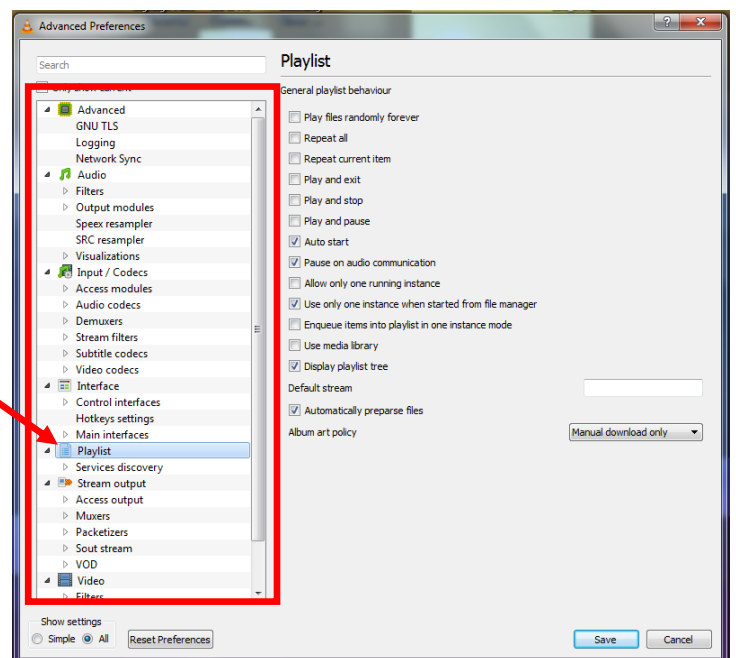
1. Open VLC Media Player
2. To set up the player to connect to the stream automatically:
 - Go to "Tools"
 - Select "Preferences"

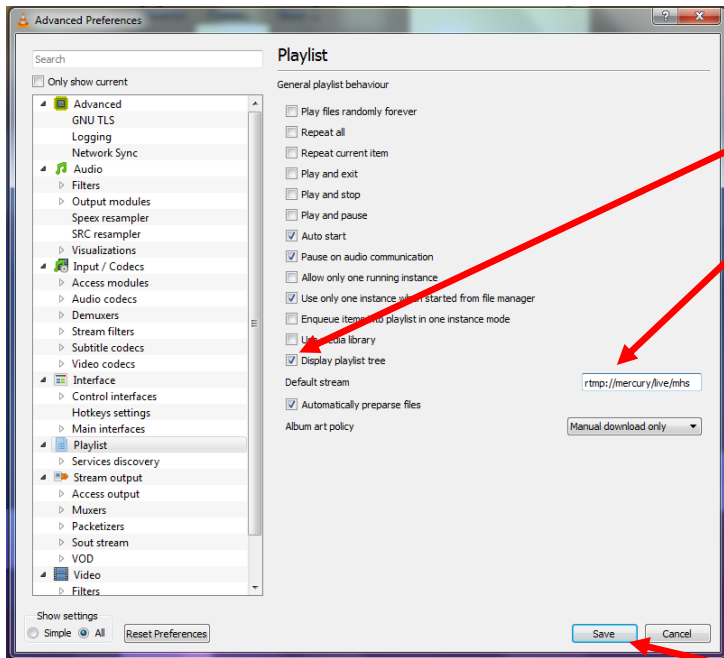


3. The Simple Preferences window will open.
 - In the bottom left hand corner under Show Settings, select "All"



4. The window will switch to "Advanced Preferences"
 - Click on "Playlist" in the menu on the left





5. Do the following under Playlist settings:
- Make sure “Display playlist tree” is checked
 - Enter the stream address in the Default stream text box

MHS

To view Mendon’s Morning Madness Stream enter the following in the Network URL box:

rtmp://mercury/live/mhs

SHS

To view Sutherland’s Knightly News Stream enter the following in the Network URL box:

rtmp://mercury/live/shs

Click on “Save”. Then close the VLC Media Player.

6. The next time you open the VLC media player it will automatically connect to the stream.
- If the stream is active, video and audio will play through the media player.
 - If the stream is not active the media player will automatically connect as soon as the stream is started.

